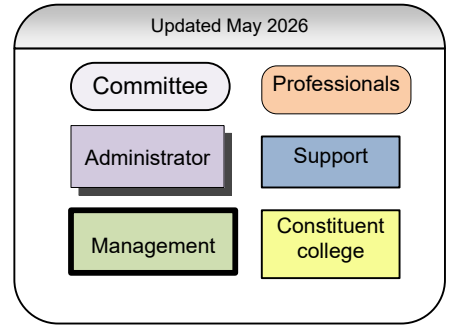


CÉGEP RÉGIONAL CHAMPLAIN ADMINISTRATIVE SERVICES 2025-2026

- COMITÉ EXÉCUTIF**
Jean-Philippe Caron, *Chair*
- SENIOR MANAGEMENT (SMC)**
Jean-Philippe Caron, *Chair*
Phil Cooper
Edward Berryman
Donald Shewan
Valérie Fournier
Isabelle Archambault
Roya Abouzia
- ALL MANAGEMENT COMMITTEE**
Jean-Philippe Caron, *Chair*



BOARD OF GOVERNORS

Geneviève Gagné
Chair
Vacant
Vice-Chair

Jean-Philippe Caron
Director General

Nathalie Couderc
Admin. Agent

Isabelle Archambault
Director, Administrative Services

Valérie Fournier
Director, Human Resources

Roya Abouzia
Director, Corporate Affairs and Communications

Vanessa Audet
Deputy Director
Financial Resources

Lydia Nadeau
Deputy Director
Material Resources

Claude Leduc
Deputy Director
Information Technologies (CSIO)

VACANT
Deputy Director HR

Josée Bouchard
Deputy Director
Institutional Effectiveness and Research

Daniel Poitras
Coordinator
Administrative Services

Vacant
Manager Purchasing

Junghyun Chae
Coordinator, Information Security and Infrastructure (Primary COMSI)

Sabrina Ouellet
Manager,
Pay, Remuneration & Social Benefits

Suzanne Towsey
Pay Master
Annie Lapierre
Manager

Brian Denison
Pedagogical Counsellor, Evaluation and Statistics
Kymerly Horth
Pedagogical Counsellor, Research
1 Vacant
Pedagogical Counsellor

Andréa Robert-Baron
Coordinator, Corporate Affairs and Communications

Chantal Gagné
Manager
Administrative Services

Christophe Sauvé
Material Resources
Counsellor – Project manager

Hocine Labsir
Information Analyst (COMSI secondary)
Aboubakr Mekhatria
Information Analyst

Anik Laforge
Nadia Alberton
Kathleen Morgan – Sabbatical
1 Vacant
Administrative technicians
Pay & Social Benefits

Phil Cooper
Director,
Cégep Champlain à Lennoxville

Cégep Champlain à Lennoxville
(See org chart du Collège Constituant)

Donald Shewan
Director,
Cégep Champlain à Saint-Lambert

Cégep Champlain à Saint-Lambert
(See org chart du Collège Constituant)

Edward Berryman
Director,
Cégep Champlain – Saint-Lawrence

Cégep Champlain-Saint-Lawrence
(See org chart du Collège Constituant)

Karen Jock
Administrative Support Agent, Principal Class
Theresa Bilodeau
Administrative Support Agent, Principal Class

Mélissa Tétreault
Information Technician, Principal Class

Dina Tavares
Administrative Technician
Pearl Mills
Administrative Support Agent, Principal Class
1 vacant